

James Pence's Most Popular Programs

On Eagles' Wings



This program, drawn from Isaiah 40:31, focuses on God's sustaining power and grace in every situation. The blacklight effect is a stunning portrait of a bald eagle.

Lord of the Troubled Sea



Jesus Christ calmed a stormy sea with only a word. This picture reminds us that he also can calm the storms of our lives. The blacklight effect shows Jesus standing at a boat's pilot wheel.

His Eye is on the Sparrow



Reminding the audience of God's providential care, this program brings encouragement to those who may be struggling in their faith. The blacklight picture is of a sparrow, held in God's hand

Roses and Thorns



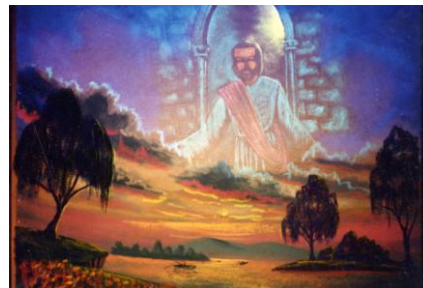
Climaxed by a blacklight picture of three red roses amidst a crown of thorns, this program reminds us that God brings "roses" from the thorns in our lives.

The Serpent in the Wilderness



Based on the story of the bronze serpent from the book of Numbers, this drawing reminds us that "as Moses lifted up the serpent, even so the Son of Man was lifted up on a cross. In the blacklight picture, the serpent "morphs" into a silhouette of Jesus on the cross.

Peaceful River



A lazy river at sunset reminds us of God's peace that passes all understanding. The blacklight reminds us to focus our eyes on our unseen hope, Jesus Christ, and our unseen home—heaven.

James also has these programs available:

Program Title/Theme	Visible Picture	Blacklight Effect
He is Risen - The resurrection of Christ	Calvary and the three crosses outside Jerusalem	Jesus standing beside the empty tomb
The Good Shepherd - Jesus is the Good Shepherd	A pastoral scene with a sheep drinking from a stream	Jesus watching over the sheep.
The True Vine - We must abide in Christ	A vineyard	A cluster of grapes on a cross
The Glorious Appearing - The return of Christ	A hill with three crosses	Jesus appearing in the sky with an angelic host
Born Again - The transformation of the new birth	A mother and daughter standing in a field of flowers	A monarch butterfly
The Solid Rock - Jesus is our rock of refuge	River and waterfall scene	A huge mountain appears in the sky, completing the landscape.
The Heavens Declare God's Glory	River and mountain scene	Jesus' face in the sky, accompanied by stars and galaxies.
At the End of the Road - Our hope in Christ at the end of our lives.	An old man standing at the bank of a river	Jesus appears in the sky, welcoming him to heaven.
The Two Roads - We must choose to follow God.	Two roads: one leading into difficult mountainous terrain, another leading through beautiful pastures.	Heaven at the end of the difficult road; hell at the end of the easy road; Jesus standing in the middle, beckoning the audience to come to heaven.
10, 9, 8 - The only way to heaven	A space shuttle, preparing for takeoff	A fiery and smoky launch. A cross is silhouetted behind it.
The Touch of the Master's Hand - Based on the song of the same title. Focuses on God's transforming power.	A violin, case, bow, music, and auctioneer's gavel.	Jesus, playing the violin.

(Sample photos of these drawings available on request.)

For booking information:

James H. Pence
Tuppence Creative Ministries
PO Box 8942
Greenville, TX 75404-8942
Phone: 903-450-4944 Cell: 214-460-0390
Email: james@pence.com Web: www.jameshpence.com